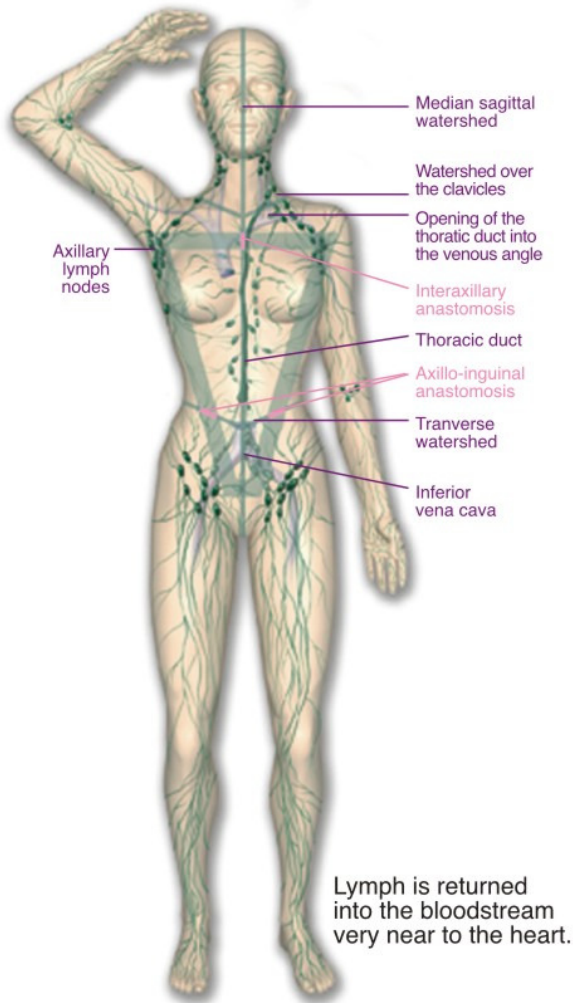


medi

I feel better
www.medi.de

Compression hosiery & its role in lymphoedema management



“For those suffering from diseases of the lymphatic system, it is essential that their treatment should be pleasant, compatible with their everyday lives, and yet as effective as possible.”



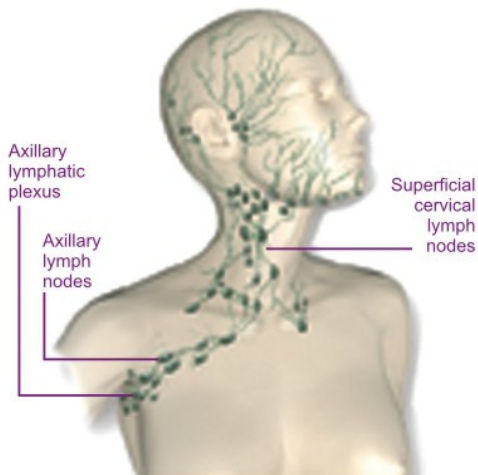
lymph nodes

Lymph nodes are found in many parts of the body. The filtering function allows the removal of harmful substances. Lymphocytes are produced in the lymph nodes. These are a type of white blood cell and form part of the body's system of defence against disease.

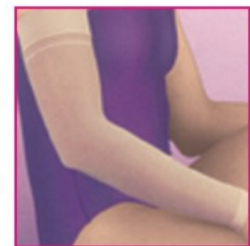


lymph capillaries & accompanying blood capillaries

The lymph capillaries are shaped like fingers and lie in spaces between the body's tissue cells. They have special openings through which all the substances that can only be removed by lymph are taken up. They are joined to precollectors that carry the lymph away.



“Compression garments are an essential part of ongoing care and must always be worn to ensure reductions in limb volume are maintained.”



The lymphatic vessels, unlike our system of arteries and veins, do not form a circulatory system but act as "blind allies" in the peripheral areas. The main role of this is to carry proteins and other substances that cannot be removed by absorption into the venous capillaries. Approx 2 to 4 litres of lymph are carried into the bloodstream daily.

Sole Importers & Distributors in INDIA



PUSHPANJALI medi India Pvt. Ltd. 16, Ganesh Chandra Avenue, Kolkata-700 013

Tel : 2236 0368, 4040 1300, Fax : (033) 2221 7335, Helpline : **91633 60368**

e-mail : pushpanjali@vsnl.com, Website : www.pushpanjaligroup.com

An ISO 9001:2008 certified organisation

Delhi Office : 98105 49981